

B-5 Pole Transfer (4kv) (Team Event)

Mean Time: 12min

Drop Dead Time: 15min

Event Summary:

In this event the competitors will be required to transfer a two phase #2 AL primary dead-end from an existing pole onto a new pole set 4' to the side. **All material will be framed on the new pole other than the dead-end shoes and neutral dead-end wrap.** Both primary conductors and neutral conductor will be moved to the new pole (original sag must be maintained). Two dead-end shoes and one neutral dead-end wrap will be provided when entering event. Competitors will have a 5min setup time, and all material can be inspected and laid out. All material and rubber goods must be kept on tarp. Time will start at judges signal, climbers will be allowed to start dressed and arm's length from pole. All general rodeo rules shall be followed. This event will be considered energized at 4kV. **All rubber goods will be provided and all teams will be required to use the same rubber goods. COVER-UP IS FOR INCIDENTAL CONTACT ONLY. PROLONGED CONTACT WITH COVER-UP WILL NOT BE ALLOWED. NO team will be allowed to use their own rubber goods for this event.**

Rubber Goods Provided: 4 – Class 2 blankets 36"x36"
4 – Class 2 rubber hoses 54"
8 – Blanket pins

Event Specifications:

1. The new pole will have a down guy at the top primary conductor and neutral position, two eye bolts with bells installed (**No DE shoes installed**), one lightning arrester at each phase mounted on fiberglass bracket, and J-6 clevis with polymer spool at neutral.
2. It will be required of the team to install new dead-end shoes on the suspension insulators already framed on the new pole at the primary positions and a #2ACSR dead end preform wrap at the neutral position in preparation for the conductor transfer. **NOTE: Each pin in the primary insulator and dead-end shoe shall be installed facing the inward direction or towards the opposite pole.**
3. The neutral conductor or any phase **must be completely covered** prior to climbing above, working above, or encroaching MAD.
4. The Primary conductor **does not need to be covered as long as MAD is maintained while moving up the pole in preparation to working on it and transferring to the new pole.** Both primary conductors shall be removed from the existing dead-end shoes and re-secured into the new dead-end shoes on the new pole. The neutral conductor shall be removed from the existing dead-end preform and re-secured to the new dead-end preform on the new pole. **Both old dead-end shoes and old dead-end preform must be sent to the ground prior to time stopping at end of event.** Lightning arrestors will be de-energized and re-energized by use of an approved shotgun stick.
5. It is permissible to perform this event with one journeyman on each pole.
6. The only approved type of rigging that will be allowed is the "**Strap Hoist**" (Hot Hoist). **No hoists will be allowed other than a line industry approved strap hoist.**
7. There must be two "**Strap Hoists**" used in this event. This will provide two points of attached rigging on the conductor prior to the transferring to the new pole.
8. Time will stop once both climbers feet are on the ground and material has been sent down. (**Dead-end shoes and neutral dead-end wrap**)

Hardware Stock Codes

Neutral clevis Maclean J0322

Spool insulator Hendrix HPI-53-2

#2 Dead-end clamp HPS ASOD5701N

25kv poly susp insulator Salisbury 9502U-SI

#2 preform wrap Preformed DG4542

10kv arrester Cooper UHS10055A1C1C1A H.D.

Fiberglass bracket Hughes Bros CF667B-12

Framing Specs

Top of pole to primary bell – 4”

Primary Bell to top bolt of guy attachment (**top** phases) – 5”

Primary Bell to top bolt of arrester bracket (both phases) – 12”

Phase to Phase spacing – 4’

Bottom phase to neutral spacing – 6’

Neutral to top bolt of guy attachment (neutral guy) – 5”



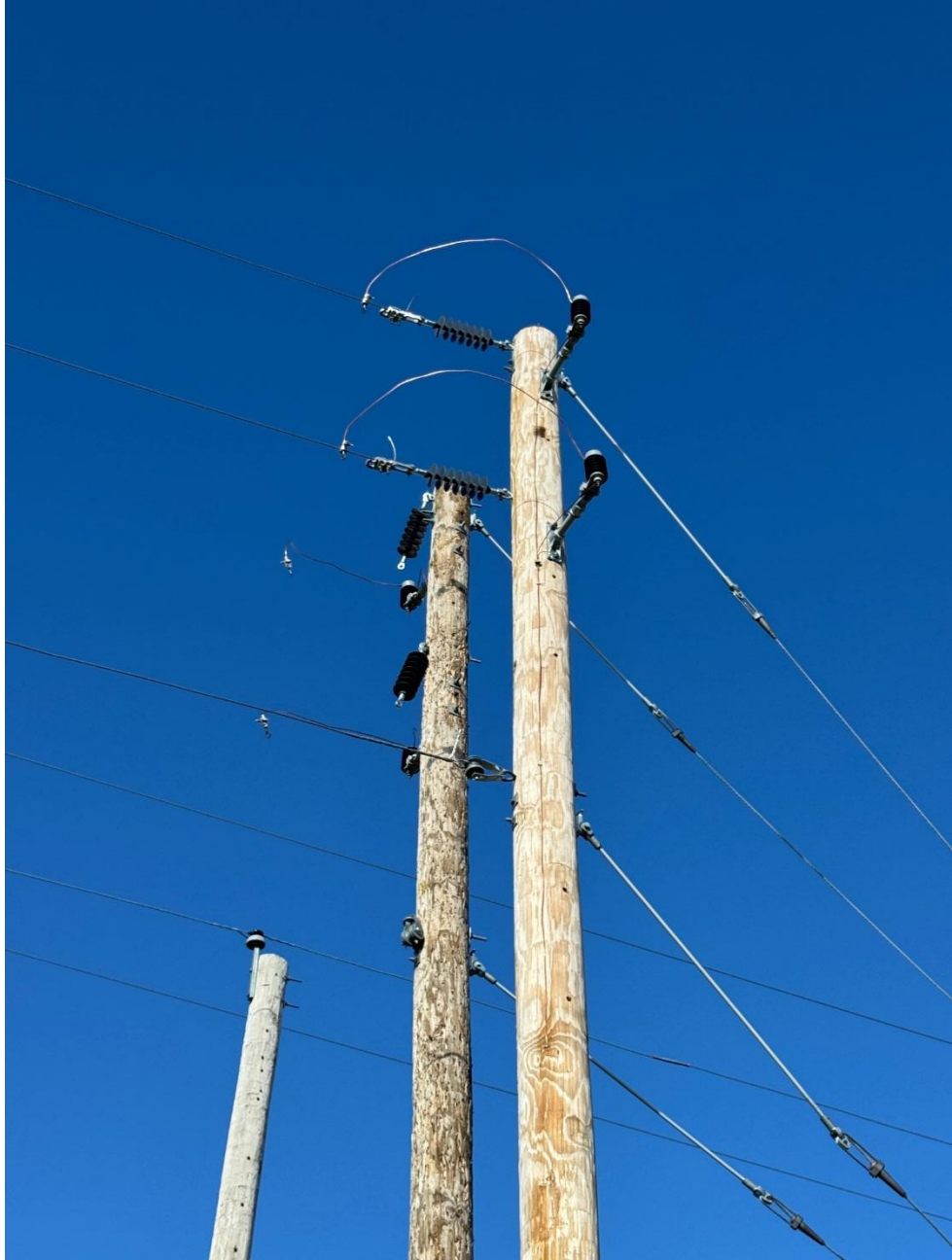














Team/Senior BS Pole
200 x 90

1" = 30'

