

# **B-5 Arrestor / Bell Change**

## **Chief Judge: Cody Roberts**

(Senior Event)

**Mean Time: 8min**

**Drop Dead Time: 10min**

### **Event Summary:**

In this event the competitor will be required to replace the lightning arrestor and polymer dead-end bell on the bottom phase of the B-5 dead-end pole. The event will be considered de-energized and may be worked in leather gloves. One new polymer bell and one new arrestor with high side jumper and hot tip already installed will be laying at the base of the pole upon entry. Competitors will have a 5min setup time and will be allowed to inspect all material and tool-up during this time. Time will start at judge's signal, with climber starting an arm's length from pole. All general rodeo rules shall be followed.

### **Event Specifications:**

1. Climber will ascend pole to bottom phase and replace arrestor and polymer suspension bell. The order of replacement does not matter. All material and tools will be sent up and down using a material bag.
2. Arrestor hot tip can be removed (#4 copper high side) and installed by hand (**no sticks are required for this event**). Ground (#6 copper) on bottom of arrestor will be hooked between two washers with a 9/16 nut.
3. Suspension bell must be changed out by use of hoist, grip, and sling. **All hoists must be industry standard rated and approved.**
4. Time will stop once all tools, material (arrestor and poly bell), bags, handlines are on the ground and climbers first foot touches

# Hardware Stock Codes

Neutral clevis                      Maclean J0322

Spool insulator                      Hendrix HPI-53-2

#2 Dead-end clamp                      HPS ASOD5701N

25kv poly susp insulator                      Salisbury 9502U-SI

#2 preform wrap                      Preformed DG4542

10kv arrester                      Cooper UHS10055A1C1C1A H.D.

Fiberglass bracket                      Hughes Bros CF667B-12

## Framing Specs

Top of pole to primary bell – 4”

Primary Bell to top bolt of guy attachment (**top** phases) – 5”

Primary Bell to top bolt of arrester bracket (both phases) – 12”

Phase to Phase spacing – 4’

Bottom phase to neutral spacing – 6’

Neutral to top bolt of guy attachment (neutral guy) – 5”



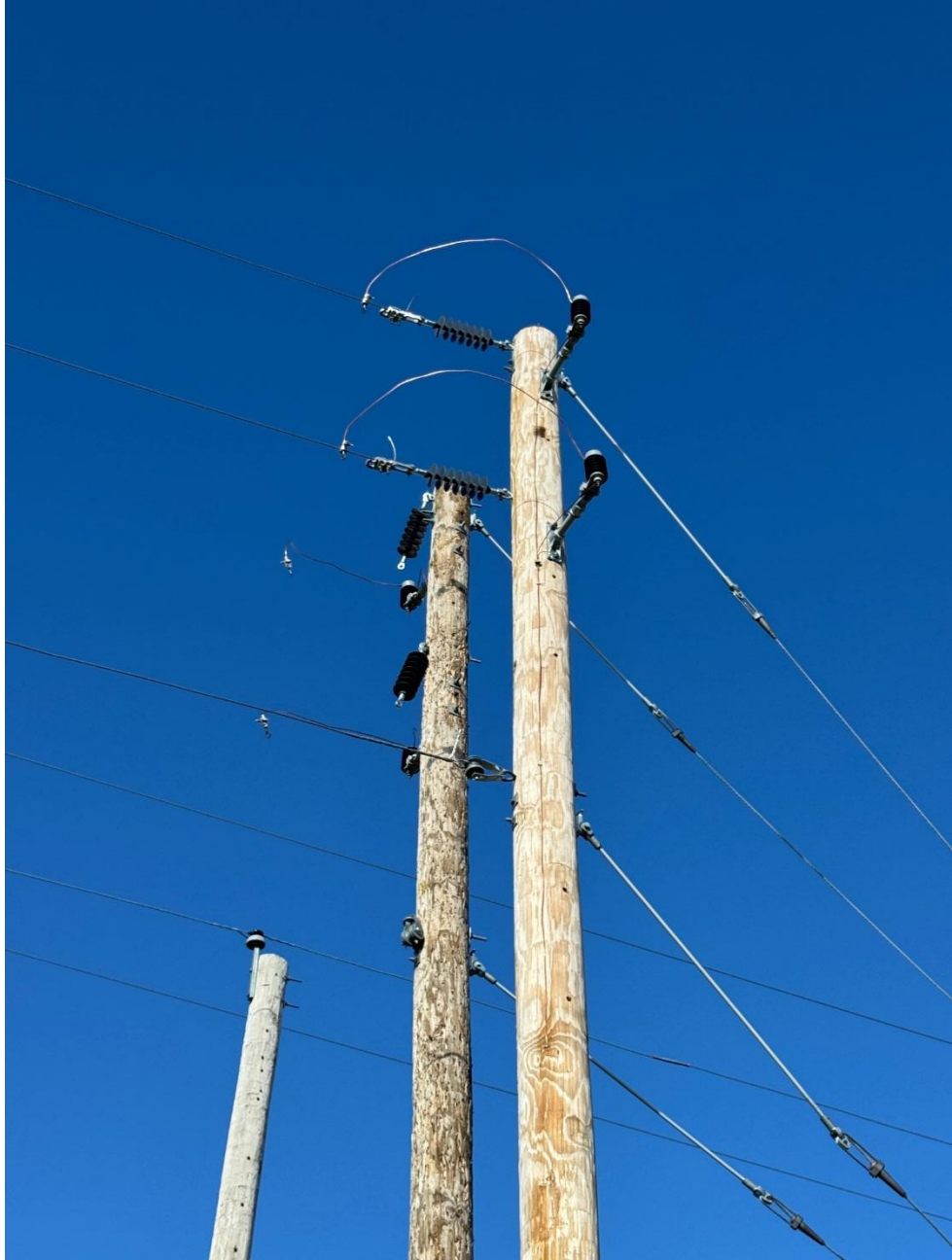














Team/Senior BS Pole  
200 x 90

1" = 30'

